

Policies Map

These have not been included in sub area policies maps as the additional layers make the maps too difficult to read.

Conservation Area: most up to date data should be sourced via Merton's website <http://www.merton.gov.uk/>

Archaeological Priority Zone: most up to date data should be sourced via Merton's website <http://www.merton.gov.uk/>

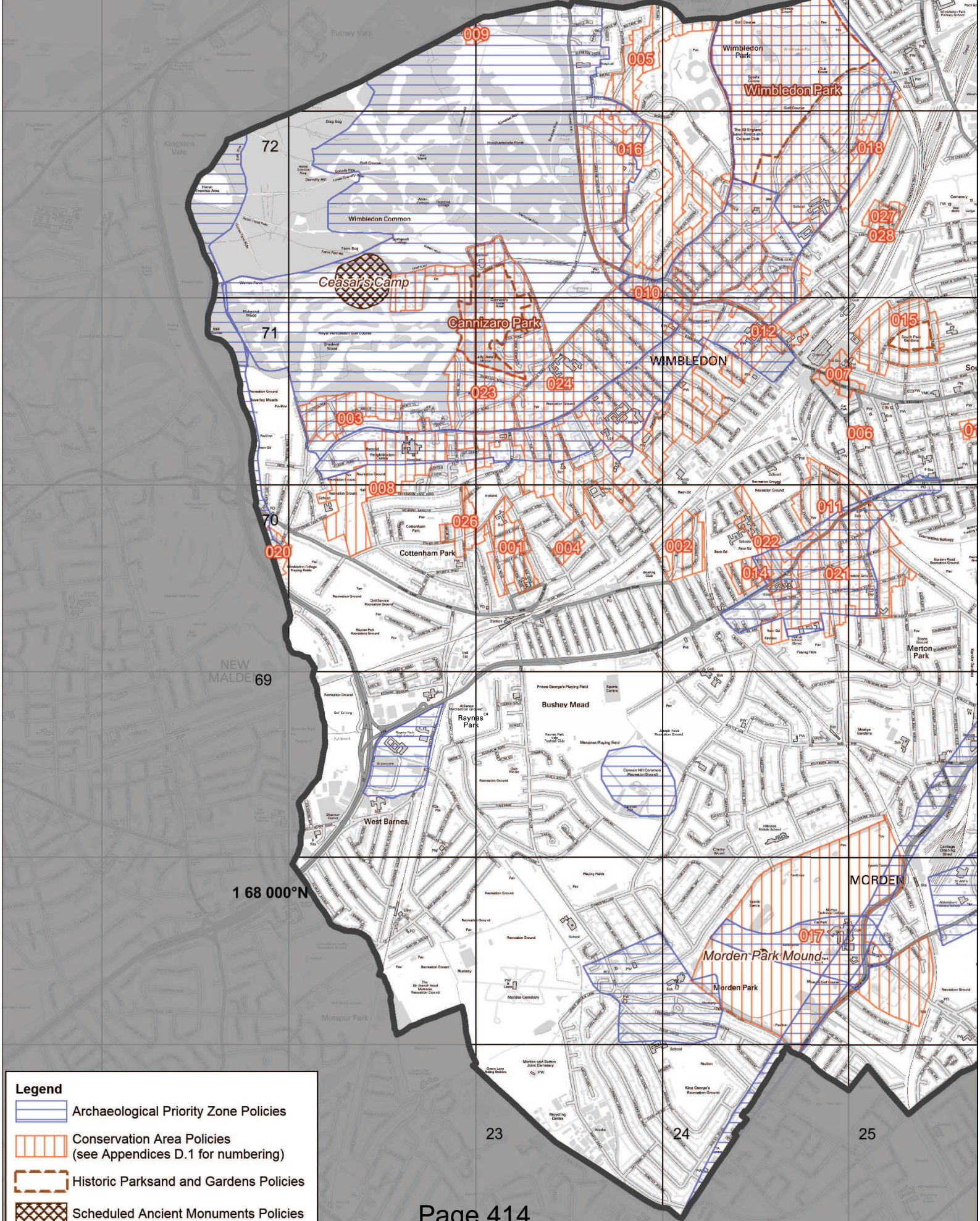
Scheduled Ancient Monuments: most up to date data should be sourced via Merton's website <http://www.merton.gov.uk/>

Historic Parks and Gardens: most up to date data should be sourced via Merton's website <http://www.merton.gov.uk/>





Flood Risk: most up to date data should be sourced via the Environment Agency website <http://www.environment-agency.gov.uk/>

Proposed Designated Industrial Areas: most up to date data should be sourced via Merton's website <http://www.merton.gov.uk/>

**Conservation Area, Archaeological Priority Zone,
Scheduled Ancient Monuments, Historic Parks and Gardens
Part of Policies Map (West Part of the Borough)**
For most up-to-date information please visit www.merton.gov.uk
Scale 1:25,000







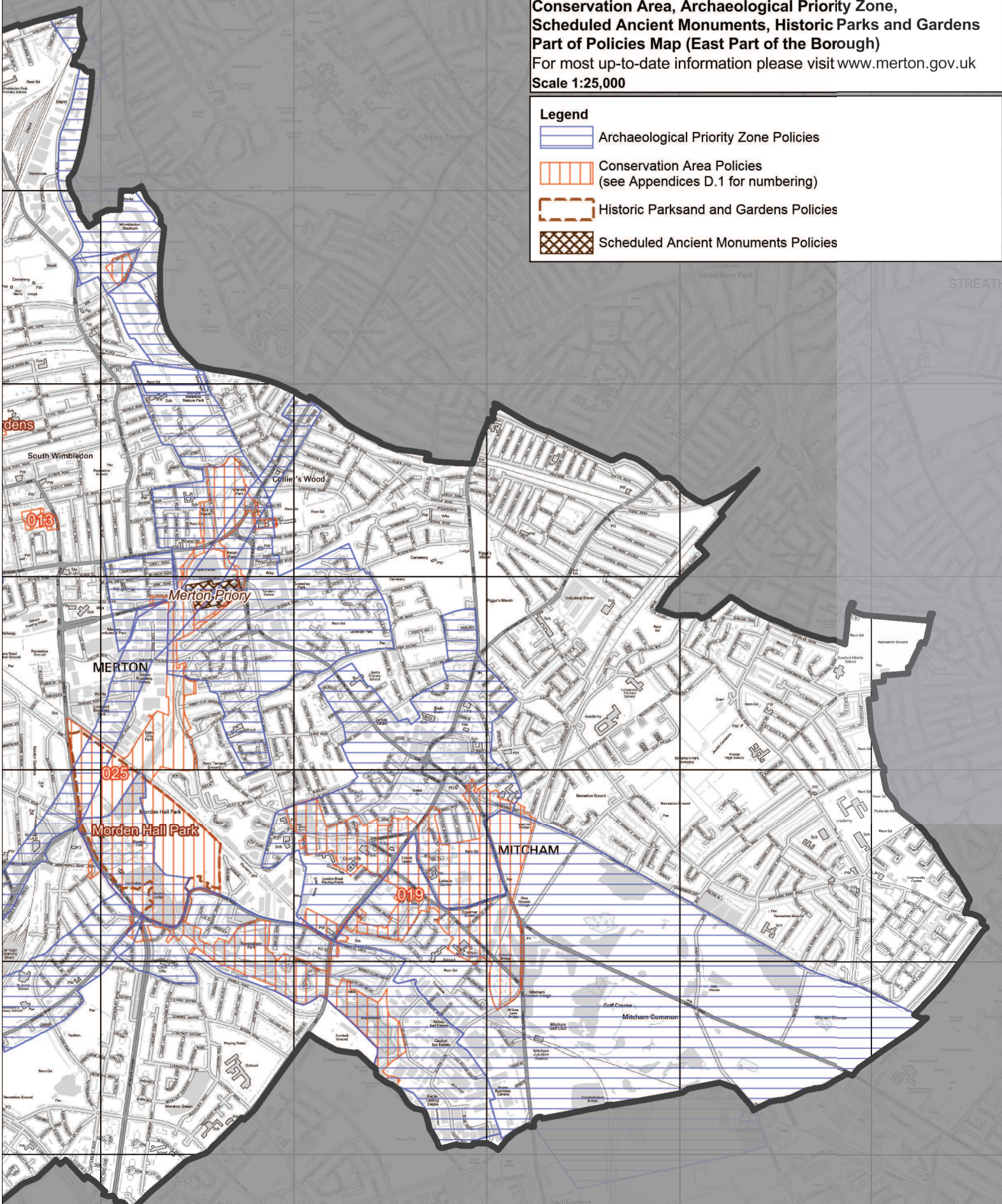
Legend

-  Archaeological Priority Zone Policies
-  Conservation Area Policies
(see Appendices D.1 for numbering)
-  Historic Parks and Gardens Policies
-  Scheduled Ancient Monuments Policies

Conservation Area, Archaeological Priority Zone, Scheduled Ancient Monuments, Historic Parks and Gardens Part of Policies Map (East Part of the Borough)
 For most up-to-date information please visit www.merton.gov.uk
 Scale 1:25,000

Legend

-  Archaeological Priority Zone Policies
-  Conservation Area Policies (see Appendices D.1 for numbering)
-  Historic Parks and Gardens Policies
-  Scheduled Ancient Monuments Policies





26 27 28 29 5 30 000°E

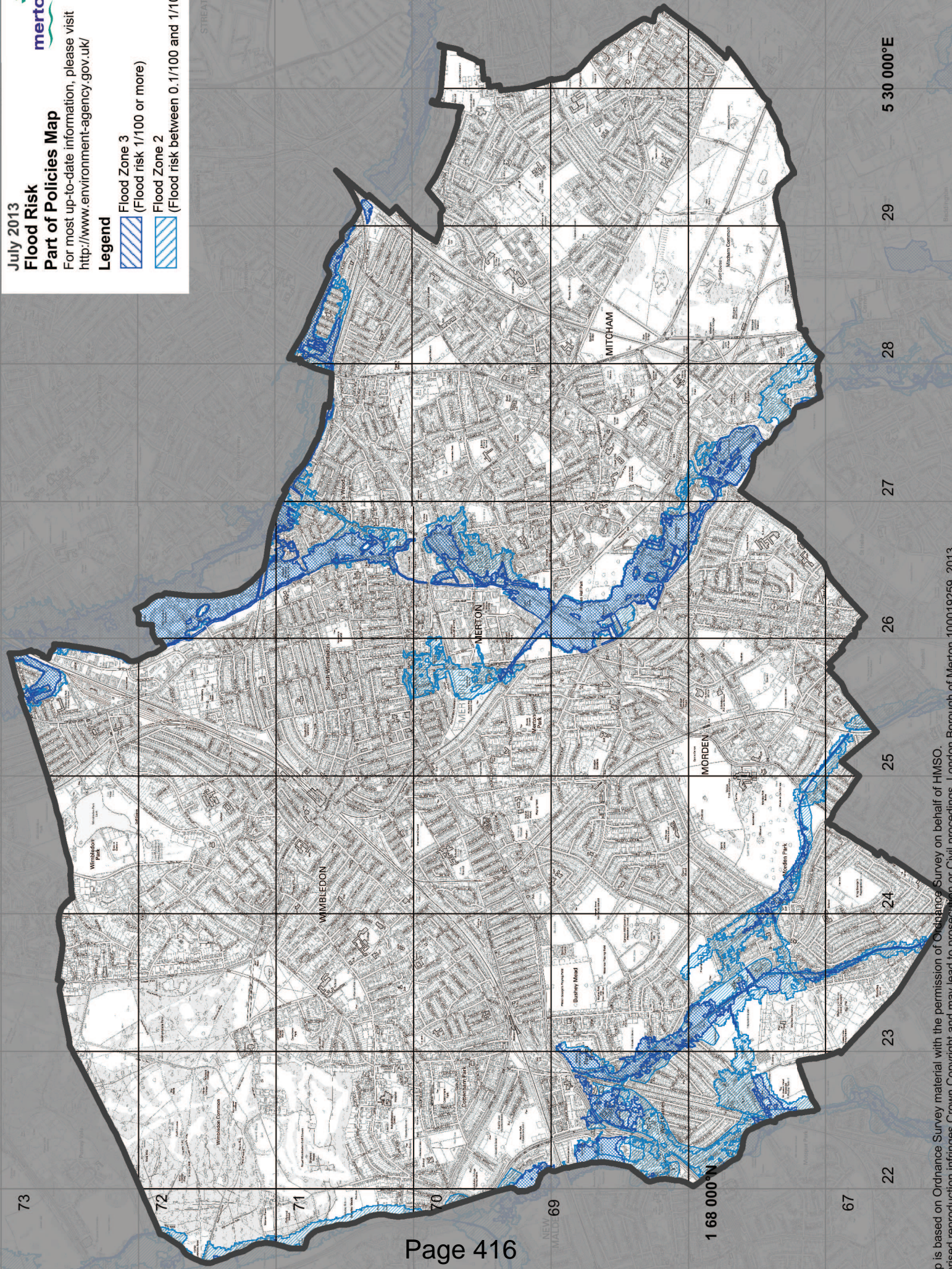


July 2013
Flood Risk
Part of Policies Map

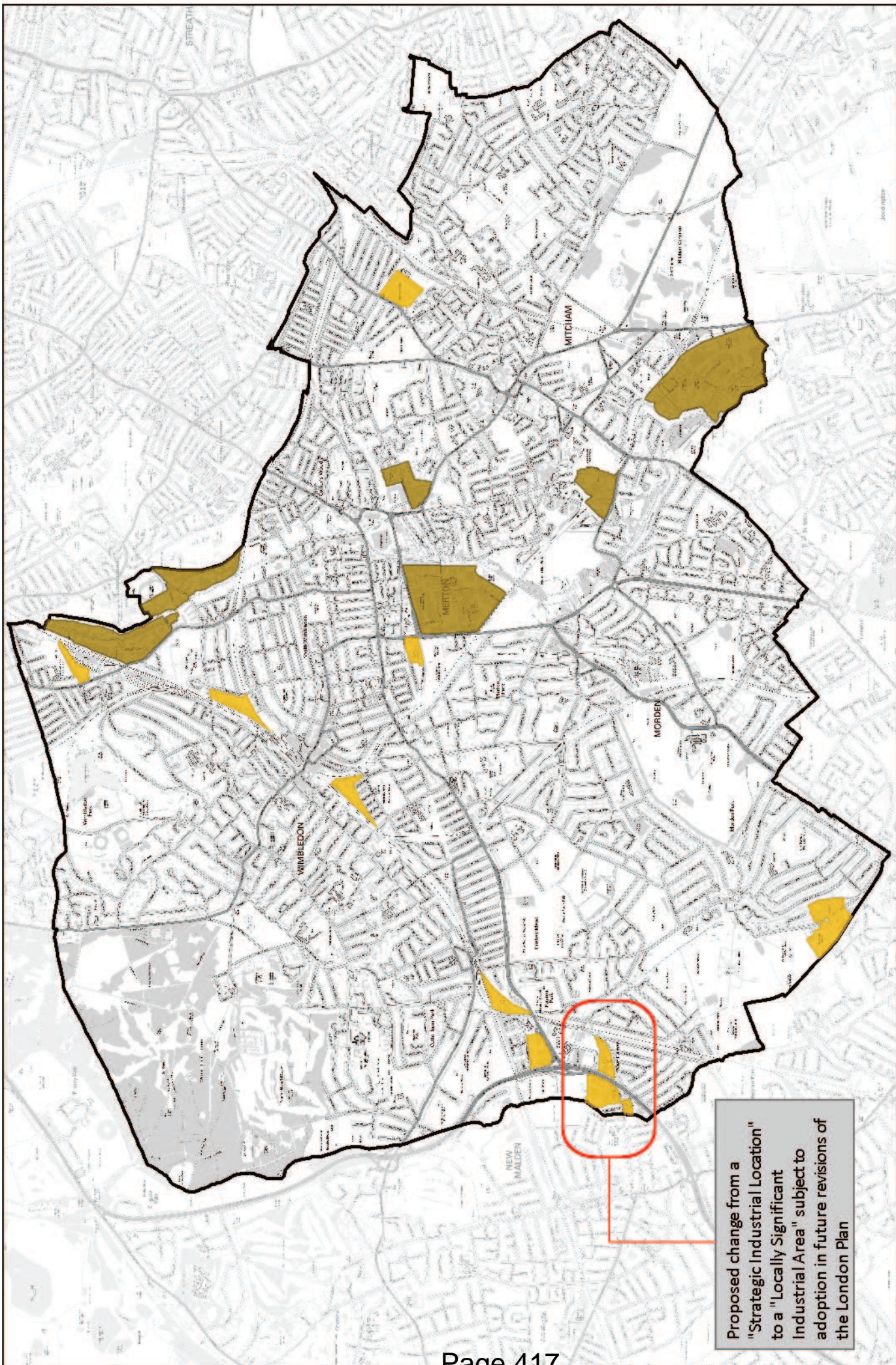
For most up-to-date information, please visit
<http://www.environment-agency.gov.uk/>

Legend

-  Flood Zone 3
(Flood risk 1/100 or more)
-  Flood Zone 2
(Flood risk between 0.1/100 and 1/100)



This map is based on Ordnance Survey material with the permission of Ordnance Survey on behalf of HMSO. Unauthorised reproduction infringes Crown Copyright and may lead to prosecution or Civil proceedings. London Borough of Merton 100019259, 2013.



Proposed change from a "Strategic Industrial Location" to a "Locally Significant Industrial Area" subject to adoption in future revisions of the London Plan

**Proposed Designated Industrial Areas
Subject to adoption in the London Plan.**

Legend

- Strategic Industrial Location
- Locally Significant Industrial Area

London Borough of Merton
 Merton Civic Centre, 100
 London Road SM4 5DX
 Tel: 020 8545 3837/4141



